

Icon Map:

The following icons are used in this template. They are available in the Google Cloud Folder on this Trello Card: <https://trello.com/c/z2j1yyVR>

While icons may look different in this template, the ones in the Google Drive folder are always the most up-to-date. Almost all icons have a complementing line version. The name is the same with the addition of an “-l” added to the end. If an icon is missing, please let me know—chances are it is in the process of being created!

- 1) Unit: [unit](#)
- 2) General Information: [unit-information](#)
- 3) Listing Information [listings](#)
- 4) Unit Measurements [system-measurements](#)
- 5) Notifications [system-notifications](#)
- 6) Unit Boards [system-boards](#)
- 7) Notes and Files [system-notes-and-files](#)
- 8) Public Files [system-files](#)
- 9) Public Notes [system-notes-red](#)
- 10) Staff Files [system-files-staff](#)
- 11) Staff Notes [system-notes-staff](#)
- 12) Property Manager Files [system-files-property-manager](#)
- 13) Property Manager Notes [system-notes-property-manager](#)
- 14) Owner Files [system-files-private](#)
- 15) Owner Notes [system-notes-private](#)
- 16) View [system-view](#)
- 17) Trashcan [system-trashcan](#)
- 18) Edit [system-edit](#)
- 19) Move [system-move](#)
- 20) Download CSV: [system-download-csv](#)
- 21) Download PDF [system-download-pdf](#)
- 22) Download: [system-download](#)

As a Unit is added, I would like the system to auto assign them a unique UNIT_ID number that is 10 digits long (?) with the prefix "U-" (U-XXXXXXXXXX) this would be used to distinguish the unit within the entire system and can be used for support/etc.



NEW TAB



Listing Active on RentBlaze:

AUTOGENERATED

Floor*:



Status*:

VACANT



**Floor would be drop down of -5 to 200. Status would be: Vacant, Prepping, Rented, Inactive
Type would be from a list generated by Super Admin. Bedrooms: Shared, Studio, 1-100.
Bathrooms 1-50 (with .5's [1.5, 2.5, etc.])**



.....



.....



● ●



● ●



FULL HTML EDITOR



^if yes then a drop down would show to select what the space is - From the "Parking Spaces" List in the Property Module.



Notifications:

This would be an area to add notifications sent just to all Tenants in the Unit. Past Unit notifications would also appear here. With the ability to edit/delete. Notifications would be Time/Date Stamped and appear under their notices icon and a pop-up (if selected).

Add Notice

Title:

Notification:

HTML EDITOR

Pop-up Notification:



Post Later

Post Now

“Post Later” would allow them to schedule the notification to post at a later date/time. “Post Now” would post it instantly. If “Pop-up Notice” is selected, then the notice would should up as a pop-up the next time they log into their system (as well as in the notifications list). Notices are automatically e-mailed to recipients.



Unit Boards:

+Add Board

Title:

Icon:

Selector from icons

Board:

HTML EDITOR

Save

Boards already created would be displayed below with options to edit/delete/move up/move down



Unit Notes & Files

Unit Public Files:

Upload Files



Owner Documents



Unit Notes:

HTML EDITOR

Staff Files:

Upload Files



Staff Documents



Staff Notes:

HTML EDITOR

Property Manager Files:

Upload Files



Tenant Documents



Property Manager Notes:

HTML EDITOR

Owner Files:

Upload Files



Owner Documents



Owner Notes:

HTML EDITOR



Unit Measurements

They can add as many measurements as they want

NEW TAB

+Add Measurement

Name:

Type:

+

Editable list by Owner (shared with Properties Measurements Module), different than materials type.

Location:

Editable list by Owner— same list used for materials and elsewhere

Measurement:

FEET

Inches, feet, yards, centimeters, meters, cups, quarts, liters, gallons, ounces, pounds, tons, milligrams, grams, kilograms, each

Length:

5

ft

Width:

2

ft

Height:

3

ft

Depth:

4

ft

Area: 10ft²

Volume: 30ft³

Depending on the measurement selected, either: (Length, Width, Height, Depth) would be shown (for inches, feet, yards, centimeters, meters) or amount would be shown (for others). When entries for LWHD are inputted, the are and cubic volume would automatically be calculated and shown (if it is missing a measurement for one of them [such as width] then it wouldn't calculate the area)).

Area is: Length x Width

Volume: Length x Width x Height

Measurement Pictures:

Upload Pictures



Measurement Files:

Upload Files



Flooring Care



Measurement Notes:

HTML EDITOR



Unit Materials:

They can add as many materials as they want

NEW TAB

+Add Material

Name:

Type:



+

Editable list by Owner (shared with Property Materials Type Module)

Location:



+

Editable list by Owner— this is same list as “unit locations” but different than property locations.

Brand:



+

Editable list by Owner (Property Materials Type Module)

Identifier:



+

Editable list by Owner (Property Materials Type Module)

Vendor:



List generated from Vendors (separate module)

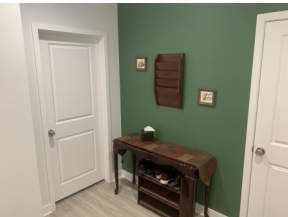
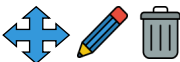
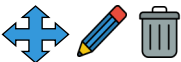
Last Installed:



date picker - will display date in overview but also how many Years/Months/Days since it was installed)

Material Pictures:

Upload Pictures



Material Files:

Upload Files



Flooring Care



Material Notes:

HTML EDITOR



Listing Information

NEW TAB

Listing Title:

Listing Description:

LIMITED HTML EDITOR

Monthly Rent:

Security Deposit:

Last Month Rent Required:*

☐

Utilities/etc. included with Rent:*

☐

Water

☐

Electricity

☐

Cable

☐

Trash

☐

Internet

This is similar to the “Property Features” where it is a editable list created by the Super Admin. It would display the icons in the “View” mode. It would be the same list for both these sections.

Utilities/etc. in addition to Rent:*

☐

Water

☐

Electricity

☐

Cable

☐

Trash

☐

Internet

Couples Allowed:*

☐

Children Allowed:*

☐

Pets Allowed:*

☐

Pet Deposit:

Pet Rent:

Pet More Info:

LIMITED HTML EDITOR

LGBTQ+ Friendly:*

☐

Gender Preference*:

▼

Male, Female, Other, No Preference

Unit Features:

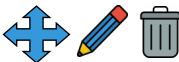
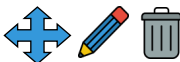
THESE WOULD BE CHECKBOXES FOR DIFFERENT FEATURES THAT WOULD BE GENERATED THROUGH THE SUPER ADMIN

Other Unit Features:

LIMITED HTML EDITOR

Unit Pictures:

Upload Pictures



Unit Embed:

